

# entials

the newsletter of  
Computer Systems Support  
August 2003, v. 4 No. 3

Students -- Lots of news  
for you. Read this issue.

## New Equipment in Elder Lab

This summer CSS upgraded the Elder lab, 1231 SC, with new HP XW4100 computers and NEC 18.1-inch, flat-panel displays for each Windows machine. These displays are mounted on adjustable arms, allowing the user to adjust the height and to swivel the display as desired. Having the monitor mounted on the arms gives students considerably more workspace.

The HP XW4100 computers installed feature a 2.4 gigahertz Pentium processor, 1.5 gigabytes of RAM, an 80 gigabyte hard disk, and a CD-RW drive. This combination allows these computers to run the latest software, and leaves plenty of room for upgrades and storage.

~Chris Fomon



New screens , computers in Elder lab

## Printing Improvement

In mid-August, CSS installed a new print server that solves the spring problems of mis-charged printing. The printers in the Elder, 1231 SC, and Hering, 1220 SC, labs and the color printer in the consulting office, 1253 SC, were moved to the new print server (server58); the old one is on server 56. You don't need to know where the print servers are unless the script to automatically re-map your printers did not run when you logged in after Sunday, 10 August.

If you have problems printing to one of the lab printers, ptrcss00-ptrcss03, or the color printer, ptrcss10, please come to the consulting office, 1253 SC, or call 5-5055, for help.

... "Printing Improvement" continued on page 2



## In This Issue

Elder Lab Update	1
Printing Improvement	1
Unix Software New Releases	2
More Windows Software	3
Pro/E Certification	3
Changes in 1245 SC	4
Voice Mail	4
Windows Security Breach	5
Bogus Email: WindowsSecurity Patch	5
Dealing with [***SPAM***]	6

... "Printing Improvement" continued from page 1

## Add a Printer

In the Printers and Faxes windows, if printers prtcss00, 01, 02, 03, and 10 are not listed as **ptrcssxx** on server58, you should delete those printers and add them. To add a printer, go to **Start | Printers and Faxes**. Select **Add a printer** from the left side of the screen. The wizard opens. Press **Next** three times, which brings you to the Find Printers dialogue box. Click **Find Now** to see printers in the Seamans Center. Browse the list until you find the printer to add and click to highlight it. Click **OK**. In the next dialogue box you can set the new printer as the default printer or not. Choose appropriately, then select **Next** and **Finish**.

## Print Quota

As in the spring, students will receive \$6.00 of print quota at the beginning of the semester. Black and white laser printing costs \$.05 per page. Color printing is \$.30 per page. Unless you chose not to, once the \$6.00 has been spent, you begin credit printing up to \$20 per month. With credit printing as you print pages each month, the charges are accumulated. Until the monthly printing has been added to your U bill, your print quota will show a negative balance. Each month your U bill will show a charge for the printing you have done, up to \$20 or the amount you authorized. After the month's print charge has been added to your U bill, your print account is set back to zero and you begin credit printing up to \$20 or other monthly limit you have set. If you do not have charging privileges, want to authorize a monthly amount other than \$20, or do not want to use credit printing, please come to the CSS main office, 1256 SC.

## Saving Money, Saving Paper

You can maximize the printing you get for the money by printing multiple pages per sheet. From the Windows application you are running, open the printer properties and select 2, 4, or more **Pages per Sheet**. Although duplex printing (printing on both sides of a sheet of paper) costs no less, duplexing does save paper.

## — Unix Software: Lots of New Releases EASY5

Release 7.0 of EASY5, replaced release 6.1 in mid-July as the default version.

### Fluent & Gambit

The new releases of Fluent, 6.1, and Gambit, 2.1.2 are now the default. Previous releases will be available until Sept. 15, 2003. To run the previous release, use the -r# argument on the command line where # is the release. The previous release of Fluent is 6.0; gambit is 2.0.4. To run release 2.0.4 of gambit, type: `gambit -r2.0.4`

### IMSL

As of 4 August release 5.0 of the IMSL Fortran 90 MP Libraries became the default. To set up your environment, source the appropriate setup file:

```
C shell: source /usr/ui/class/aux/imsl50_setup.csh
```

Bash or Korn shell:

```
./usr/ui/class/aux/imsl50_setup.sh
```

For the latest documentation, type: **imsl50doc**

### Mathematica

Release 5.0 of Mathematica has been installed. To run, type **mathematica50** at a Unix shell prompt or select **Comm Apps | Mathematica | Other Versions | Next release**. Release 4.2 will be available until Sept. 15, 2003, at which time 5.0 will become the default release.

### Pro/E Wildfire

The new release of Pro/Engineer called "wildfire" became the default version on 18 August. The wildfire release has redesigned menus. PTC, the Pro/E authors, has provided a lot of information about moving to the new menu structure. When you first invoke the application, a help browser window opens and you can select several help options related to the new release.

### Simulink, Matlab Toolboxes

Simulink was upgraded to release 5.0.2. Matlab toolboxes recently upgraded were Statistics 4.1 and Image Processing 4.0.

~Susan Beckett



## More Windows Software: --- Nero, Real-DRAW, WS\_\_FTP, Updates

### Create CDs and DVDs with Nero

Nero is a utility for burning music or data to CD or to DVD using CD-R, CD-RW, DVD-R, and DVD-RW discs. CDs written by Nero can be read on machines with different hardware configurations, so you can take your CD to almost any computer and be able to use it. Nero is also versatile. Nero Express has functions needed for most users' needs and is very easy to use. Nero Cover Designer is a CD cover design graphics program. Use Nero Wave Editor to edit and create audio files. The Nero Toolkit includes CDSpeed, which provides information about the speed of the CD and DVD drives in the computer; Drive Speed, to adjust the reading speed of the CD drive; and InfoTool, which lets you view the content of an image file. The documentation provides program instructions as well as troubleshooting information and FAQs. See the Nero web site <http://www.nero.com/us/index.html> for information about the next release, which CSS will install this fall.

Find Nero Express at **Start | All Programs | Utilities | Ahead Nero | Nero Express**. If you want to use the more advanced Nero - Burning Rom, go to **Start | All Programs | Utilities | Ahead Nero | Nero - Burning Rom**

See the e-tude about Nero at <http://css.engineering.uiowa.edu/tools/etudes/nero.html>

### Real-DRAWing: Vector, Bitmap, 2 & 3D

After years of looking and not finding, we have recently come across a Windows-based 2D, 3D, bitmap and vector drawing program called Real-DRAW. Real-DRAW is capable of much more than can be mentioned here including vector and bitmap editing, 2D and 3D effects; it includes an illustration package, a web/multimedia graphics generator, and a rendering program. The locally written e-tude is a good introduction; find it at <http://css.engineering.uiowa.edu/tools/etudes/realDraw.html>. The program also comes with extensive help. And you can find out more about Real-DRAW Pro from the web site <http://www.mediachance.com/realdraw/index.html>

Go to **Start | All Programs | Engineering Software | Real-DRAW PRO** to run the program.

### A Secure FTP Package: WS\_\_FTP

CSS found and installed an improved, graphical FTP (file transfer protocol) program that includes SFTP (secure FTP) called WS\_\_FTP. WS\_\_FTP replaced SmartFTP. Read the e-tude that explains using some of the program's features; it is available at [http://css.engineering.uiowa.edu/tools/etudes/ws\\_ftp.html](http://css.engineering.uiowa.edu/tools/etudes/ws_ftp.html)

Find it under **Start | All Programs | Utilities | WS-FTP Pro**

### Updated

In preparation for the beginning of classes, several programs were updated: Maple, MathCAD, Mathematica, Matlab, and Synchro. To find out the status of other Windows software, check the web page [http://css.engineering.uiowa.edu/sware/xp\\_software\\_status.html](http://css.engineering.uiowa.edu/sware/xp_software_status.html)

Note about Mathematica 5: the first time you start Mathematica 5, you must wait for the installation process to run. Be patient. It is a one-time process.

---

## Pro/ENGINEER Wildfire Certification is here!

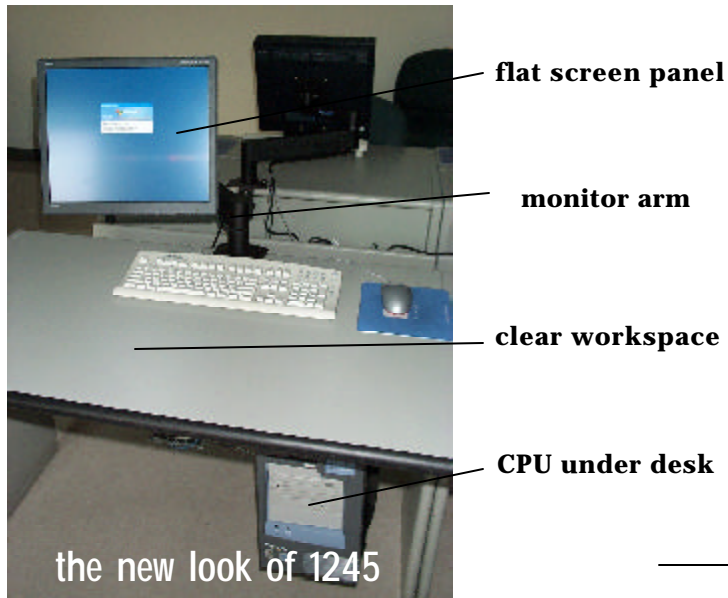
Beginning June 14th, the PTC Certified Professional Program will be available to you and your students! This will be a great tool for both of you, and a nice addition to the resumes that students are sending to potential employers!

The PTC Certified Professional Program (PTCP) is different in scale, scope and intent than anything we've done in the past. The aim is to build an education program that will have weight and measure in the market for users of our software. It also creates a benchmarking process for companies when evaluating potential employees or competing for business. The first certification exam (Level I exam) assesses baseline competency with Pro/ENGINEER. Other certification exams (Level II and Advanced) as well as modular exams are in process.

Please visit [www.ptc.com/go/certification](http://www.ptc.com/go/certification) for more information. The exam is \$200, and will be offered at over 4,000 worldwide testing locations. Registration opens on July 28<sup>th</sup>, 2003. PTC is evaluating a discounted price for students, but CSS has not received information about that price at this time.

## Changes in 1245 SC Henry Computer Classroom

Fall 2003 brings changes to the 1245 Henry Computer Classroom, changes made with the goals of the classroom in mind. Each desk has been refurbished with new paint and hard rubber edge guards. The CPU towers have been moved underneath the desks, flat-panel screens replaced CRT monitors, and the screens are mounted on



adjustable arms. All these adjustments free up desktop space and make servicing the computers more convenient.

Flat-panel LCD screens that replaced the larger CRT monitors have a sharper image. Featuring an extra wide viewing area and a slim frame, these screens allow for greater visibility of the task at hand without blocking the view of the front of the classroom. The LCD screens have been attached to newly installed monitor arms. The combination of the LCD screen and the monitor arm allow users to customize screen height, distance, and angle as separate elements, while freeing the desk for notes, a feature useful for classroom students.

The only items remaining on the desk are keyboards and optical mice. These USB mice are an upgrade from the previous equipment as well, and feature smoother movement over time.

In addition to the obvious physical changes in 1245, there have also been policy changes. The

Henry Computer Classroom has been reassigned from College control and financial support to CSS management and student computer fee funding support. Now the 1245 computer equipment will now be part of the same three-year renewal program as the other student computer labs. As part of this reassignment the usage policy is being updated and is currently under review by the Deans office. A goal of the new policy is to prioritize class use of the room based upon the level of computer use in class.

When it is not being used for classes 1245 can be used as a computer lab. All engineering students can enter the 1245 Henry Computer Classroom using their electronic access card. The schedule for classes being taught in 1245 is posted at [http://css.engineering.uiowa.edu/labs/1245\\_schedule.html](http://css.engineering.uiowa.edu/labs/1245_schedule.html).

~ Doug Eltoft, Christy McDaniel

## Voice Mail

All university phones now include voice mail, a service that previously carried a monthly charge. If you have an answering machine in your office, now you can replace that answering machine and use the university voice mail system. You can get to your voice mail on and off campus, any time of day. You can forward your university phone so that callers are directed to voice mail immediately (when you are on vacation) or after 3-5 rings.

For information about the university voice mail service, read [http://www.its.uiowa.edu/tns/voice/voice\\_mail/voice\\_mail.htm](http://www.its.uiowa.edu/tns/voice/voice_mail/voice_mail.htm)

For pricing, go to [http://www.its.uiowa.edu/tns/Pricing/price\\_sheet.htm](http://www.its.uiowa.edu/tns/Pricing/price_sheet.htm) (see the Voice Mail / ACD Services section).

The voice mail user guide is on-line at [http://www.its.uiowa.edu/tns/voice/user\\_guides/vm\\_user\\_guide.htm](http://www.its.uiowa.edu/tns/voice/user_guides/vm_user_guide.htm)

To get started, call Voice Processing (319)335-2949.

## Windows Security Breach



**No jargon summary:** *Windows is not a perfect operating system. It has some holes. Hackers find those holes and use them to cause problems. This hole allows an attacker to get control of a computer that is running a version of Windows that has not been updated.*

On July 16 Microsoft issued a security bulletin (MS03-026), Buffer Overrun in RPC Interface, describing a possible, serious exploit for all recent versions of Windows. The exploit uses port 135.

CSS has already scanned and applied the Microsoft patch to all college-administered Windows computers. If you run a self-administered machine, you should apply the patch at <http://windowsupdate.microsoft.com> site. For details about the exploit, read [http://www.microsoft.com/security/security\\_bulletins/ms03-026.asp](http://www.microsoft.com/security/security_bulletins/ms03-026.asp)

The patch does not fully protect computers, but to mitigate the effects of this exploit, CSS has blocked the affected ports on the non-server networks (20, 21) and on the non-server range of the 22 network. On the server network, 23, the affected ports have been blocked from traffic coming from outside the university, but attacks originating from within the university could affect unpatched machines. Blocking the ports does not protect the machine. You must still install the patch referenced above.

If your machine has been affected, the latest version of Norton AntiVirus will detect but cannot repair the results of the exploit. You must reload the operating system and install the necessary patch.

If you don't know what network your computer is on, go to **Run... | cmd** and from the shell prompt type **ipconfig**. In the response, read the IP Address which will be 128.255.xx.xxx. The 3<sup>rd</sup> number in the series, following "255", is the network the computer is connected to.

CSS posted this at [http://css.engineering.uiowa.edu/news/july03\\_windows\\_exploit.html](http://css.engineering.uiowa.edu/news/july03_windows_exploit.html) and will post additional information at <http://css.engineering.uiowa.edu/news/index.html>. ITS posts information about security issues at <http://www.its.uiowa.edu/cio/ITSecurity/notices/>

## Bogus Email re: Windows Security Patch

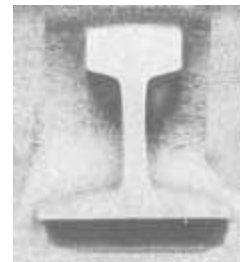
In July and August CSS saw a lot of email that purports to come from Microsoft with the subject line of "Microsoft Security Patch". The contents of the mail claim to be a cumulative patch update for Windows and encourages you to install the attached program. The message contains many characteristics of an official Microsoft document, including Microsoft disclaimers and links to Microsoft web sites.

This mail was sent because of a real Windows security hole (see "Windows Security Breach" at left). Read that article to understand the issue and this article to know what email to believe and what to ignore.

If you administer your own computer here or at home and receive this mail, do not be deceived. The attachment is a virus. Delete the message and the attachment. Microsoft does send out security announcements but NEVER attaches the actual update. Update your computer only from the [windowsupdate.microsoft.com](http://windowsupdate.microsoft.com) site, never from email attachments. Security messages will have a link pointing directly to a Microsoft site for you to download an official update.

If you use a college-administered Windows computer and if you get this message, the attachment will have been renamed with the .virus-scan-me.virus-scan-me extension. Delete the message and the attachment.

Please do read the security announcements from ITS about the need for a new Microsoft Windows update due to a newly discovered security flaw. You do need to install that update if you administer a Windows computer. CSS has already installed updates on Windows machines that are college-administered.



## Dealing with [\*\*\* Spam \*\*\*]

CSS has added two features to email that may simplify dealing with spam, unsolicited mail, you receive. In May CSS began using SpamAssassin, a mail filter to identify spam. SpamAssassin uses rules that look at mail headers and body text and assigns a score to the message. Messages that score over 6 are tagged [\*\*\* SPAM \*\*\*] in the subject line. CSS can and has and will continue to adjust the rules so that SpamAssassin does an increasingly better job of identifying spam mail.

Messages with the [\*\*\* SPAM \*\*\*] tag are delivered with all other mail to your inbox. You have to decide whether or not to open such messages. If you find messages that have been incorrectly identified as spam, please send the message with all the headers visible to [postmaster@engineering.uiowa.edu](mailto:postmaster@engineering.uiowa.edu)

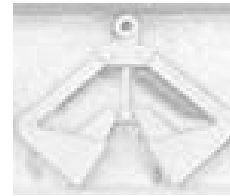
### Spam Mailbox

Using your preferred mail client (Eudora, Mozilla Mail, Pine, or WebMail), create a folder on the mail server named Spam [must be capital "S" and lower case "pam"]. Mail that SpamAssassin identifies as spam is automatically put in the Spam folder. All

such mail has a subject line that starts with [\*\*\* SPAM \*\*\*]. You can open the Spam folder and read or discard all mail put there. Like the Trash and the Virus\_Quarantine folder, mail left in the Spam folder will be deleted after 7 days. If you find a message that has been incorrectly identified as spam, please send it with all the headers visible to [postmaster@engineering.uiowa.edu](mailto:postmaster@engineering.uiowa.edu)

If you need help sending mail with the headers on or have questions about our spam filter, please talk to the consultants, 5-5055, 1253 SC.

~Diana Harris



Essentials is a publication of Computer Systems Support (CSS) in the College of Engineering at the University of Iowa. Essentials is published during the year whenever there is sufficient news to report to the user community. You have permission to reprint all or part of this newsletter for nonprofit purposes if you 1) acknowledge this source, and 2) send a copy of your publication with the reprinted material to: Newsletter Editor, College of Engineering, Computer Systems Support, 1256 SC, University of Iowa, Iowa City, IA 52242.

This issue:

Editor: Diana Harris. Contributors: Susan Beckett, Doug Eltoft, Christopher Fomon, Diana Harris, Christy McDaniel



Jargon Rating: 0-2 ++. No image means there is no jargon and it should be easy to read and understand. Two plus signs mean lots of jargon. One plus falls between. All 2 plus articles include a no jargon summary at the top.

Images: © 1999-2003 [www.barrysclipart.com](http://www.barrysclipart.com)

### Hours

Computer Labs — The Hering (1220 SC) and Elder (1231 SC) labs are open 24 hours/day, 7 days/week except for maintenance. With an access card, you can enter the building and the labs after the building closes.

Consulting, 1253 SC — M-Th 8am – 9pm; F 8am – 5pm; Sun 5pm – 9pm

CSS Main Office, 1256 SC — M-F 8am – noon, 1-5pm

### Web Sites

This newsletter is published first to the CSS web pages at

<http://css.engineering.uiowa.edu/news/essentials>

The CSS pages are found at

<http://css.engineering.uiowa.edu>

The College of Engineering pages are at

<http://www.engineering.uiowa.edu>

The University of Iowa pages are at

<http://www.uiowa.edu>

CSS mission: to provide a secure and productive computer environment that supports the ability of the College of Engineering to achieve its educational mission.